

## Technical Information | Article No.: XECM062



**Adhere to the manufacturer's instructions.  
PPE must be used as required.**

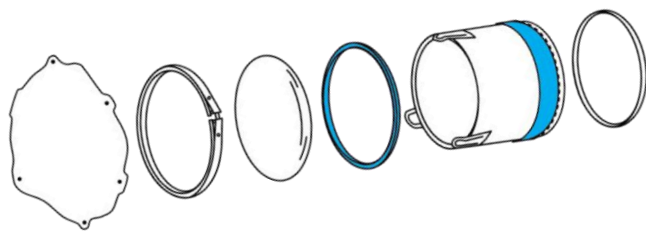


### Deviations/changes compared to the OE



Eminox DPFs do not feature the installation aid component (highlighted in blue in the DPF diagram) as it can cause problems when removing the filter in the future. The OE manufacturer has also removed this part in updated versions of the filter. Due to an optimised manufacturing process, the Eminox DPF does not require the edges at the ends of the filter housing to be folded over. This also eliminates the ring of fabric around the top of the filter.

In addition to the items supplied by the OEM, we also include the muffler cover seals as standard. The EMINOX DPF has been tested and certified for use in Scania exhaust systems.



### Removing the particulate filter



1.1 Remove mounted parts so that the outer cover of the particulate filter is freely accessible.  
In some cases, it may be necessary to remove the muffler.



1.2 Loosen the screws of the outer cover and remove it.

**Attention:** The (5) screws may be very tightly fastened due to external and/or thermal influences. The cage nuts behind the screws may be damaged during loosening. If so, these must be replaced.

1.3 Mark the position of the clamp. Next, release the clamp and remove it along with the cover.

1.4 Mark the position of the (3) particulate filter screw joints and unscrew them.



1.5 Attach the assembly tool to the muffler.  
To do so, position the tool on the top of the muffler so that the 2 retaining tabs engage in the openings. Next, lock the tool in place using the clamping pin so that the 2 retaining tabs on the bottom of the muffler also engage in the openings.





Apply the pressure plate of the tool to the DPF so that the tabs of the plate can engage in the lugs on the DPF. These may have to be bent into position using a screwdriver. Insert the pull rod into the assembly tool and use the clamping pin to lock it in place on the pressure plate.

Remove the particulate filter by turning the nut on the pull rod.

The assembly tool must be removed from the muffler before the DPF can be extracted from the muffler.

**Attention:** *The core of the particulate filter is made of ceramic material and is fragile! Handle with care!*

*The assembly tool pressure plate must be clean and grease-free.*

**This section only applicable for Exchange Units: Unpack and pack the filter**



2.1 Take the new particulate filter out of the packaging along with the seals and mounting grease. The filter seal is already pre-installed on the filter.

2.2 Place the removed particulate filter in the supplied bag without the seal and pack it safely for dispatch in a cardboard box. If possible, please reuse the Eminox box the unit was supplied in.

Dispose of the used seals correctly.



**Fitting the particulate filter**

3.1 Clean the contact/sealing surfaces.



3.2 Apply graphite paste to the pre-installed seal on the particulate filter and insert the filter into the muffler without tilting the filter.

**Attention:** *The DPF cannot be fitted without using graphite paste. If the DPF is tilted during insertion, it may have to be pulled back out. This can damage the seal! Pay attention to the position of the DPF's screw joints. They are asymmetrical.*

3.3 Attach the assembly tool to the muffler as described in section 1.6.




3.4 Apply the pressure plate of the tool to the DPF so that the tabs of the plate do not engage in the lugs on the DPF. Insert the pull rod into the assembly tool and use the clamping pin to lock it in place on the pressure plate.

Install the particulate filter by turning the nut on the pull rod.

**Attention:** *Do not use force to install the particulate filter.*

		<i>The assembly tool pressure plate must be clean and grease-free.</i>
	3.5	Screw the particulate filter into the muffler using the screw points. Next, install the cover with a new seal using the existing clamp.
	3.6	Install the outer cover.
	3.7	If necessary, reinstall the muffler in the vehicle. Refit the mounted parts in reverse order.

#### Garage PC tasks

	4.1	Reset the ash level using the Perform exhaust aftertreatment function in the Scania SDP3 application. (The menu item may have a different name in third-party software).
---	-----	--