

## Technical Information | Article No.: XEDN099



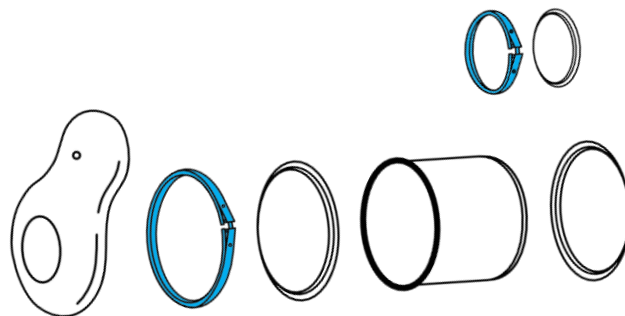
**Adhere to the manufacturer's instructions.  
PPE must be used as required.**



### Deviations/changes compared to the OE



In addition to the items supplied by the OEM, we also include the muffler cover clamps as standard. The EMINOX DPF has been tested and certified for use in MAN exhaust systems.



### Removing the particulate filter

- |     |   |
|-----|---|
| 1.1 | Remove mounted parts so that the cover of the particulate filter is freely accessible.          |
| 1.2 | Carefully remove any sensors, cables and/or hoses.  |
| 1.3 | Mark the position of the clamps. Next, release the clamps and remove them along with the cover. |
| 1.4 | Remove the particulate filter.  |



**Attention:** The core of the particulate filter is made of ceramic material and is fragile!  
Handle with care!

### This section only applicable for Exchange Units : Unpack and pack the filter



- |     |   |
|-----|---|
| 2.1 | Take the new particulate filter, clamps and seals out of the packaging and fit the supplied seals in the same position as the ones used for the removed filter. |
|-----|---|

2.2 Place the removed particulate filter in the supplied bag without the clamps and seals and pack it safely for dispatch in a cardboard box.. If possible, please reuse the Eminox box the unit was supplied in.

Dispose of the used clamps and seals correctly.



### Fitting the particulate filter

3.1 Clean the contact/sealing surfaces. Remove any fluid from the muffler.

3.2 Install the new particulate filter.



3.3 Refit any sensors, cables and/or hoses that were removed in line with point 1.2. Pay attention to the tightening torques specified by the manufacturer.  
Temperature sensor: 38 Nm, air duct: 55 Nm

3.4 Refit the mounted parts in reverse order.

### Garage PC tasks



4.1 Read the diagnostic codes by navigating through the menu in the MAN-cats application. (The menu item may have a different name in third-party software).